

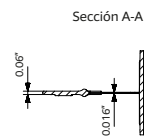
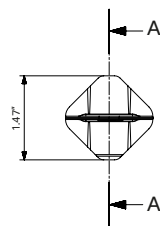
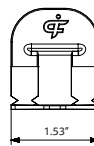
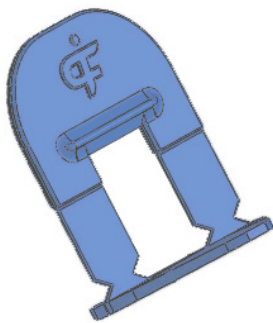
TECHNICAL SPECIFICATIONS
Leveling system

Crossheads and wedges

The Profilber Leveling System is designed to achieve the perfect leveling of tiles on any surface, avoiding movements during setting.

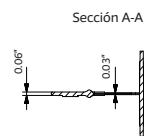
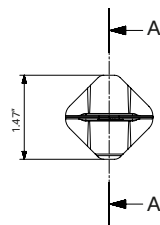
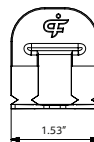
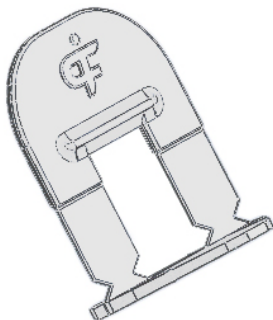
With our system, a **reduction in porcelain stoneware installation times** is accomplished, achieving a **perfect leveling and without unevenness**.

Ceramic crosshead 1/51"



Volume	0.20 cubic in.
Weight	0.13 oz.
Material	PA

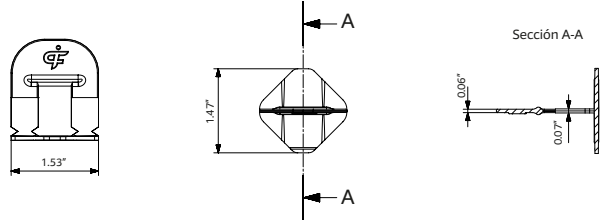
Ceramic crosshead 1/32"



Volume	0.20 cubic in.
Weight	0.13 oz.
Material	PA

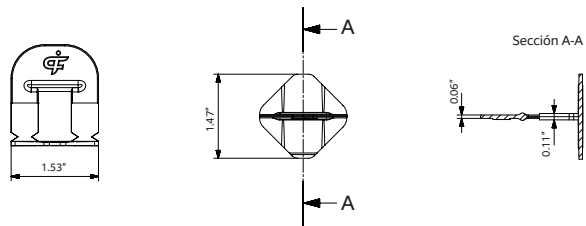
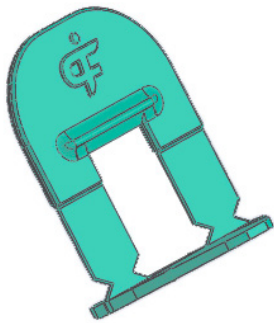
Crossheads and wedges

Ceramic crosshead 1/16"



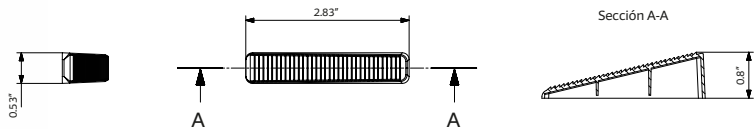
Volume	0.20 cubic in.
Weight	0.15 oz.
Material	PA

Ceramic crosshead 1/8"



Volume	4,2 cm³
Weight	0.25 oz.
Material	PA

Reusable wedge



Volume	0.21 cubic in.
Weight	0.17 oz.
Material	PA

LEVELING SYSTEM

Crossheads and wedges



1- Placing is simple and quick due to the shape of the crosshead. Leveling is accomplished with the insertion of wedges into each crosshead, whether it is inserted manually or with the use of professional pliers.

2- Tiling with cross-pieces and spacers is recommended.

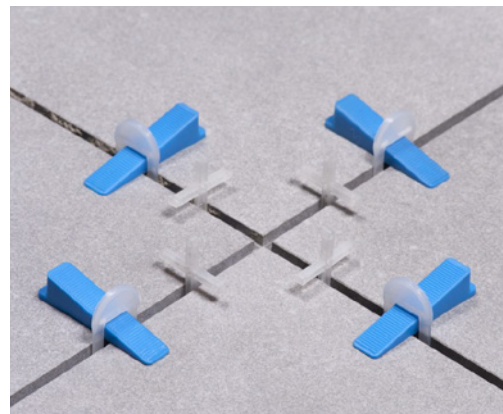
3- Hit the tiles gently to release excess tension and wait until the glue is set before removing the system.

4- Use a hammer or remove the system manually.

5- Wedges are very resistant and can be reused for future installations.

BENEFITS

- Greater stability and grip surface
- Quick insertion and removal
- Reusable wedges with greater resistance
- Time saving
- Cost savings in the process
- Easy to break wedge-shaped tear zone

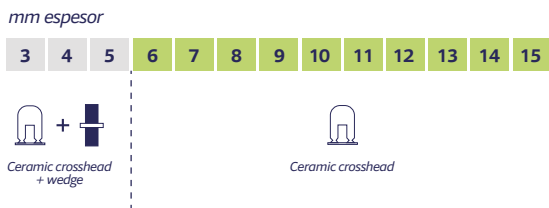


Crossheads and wedges

Crosshead Measurements for the Tile Leveling System

The crosshead you need will depend on the thickness of the ceramic you want to use.

We have crossheads for different thicknesses (1/51", 1/32", 1/16" and 1/8") with this we cover the different thicknesses that exist in the market.



How many pieces do you need?

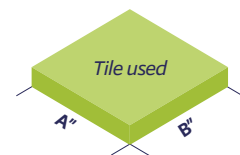
The table shows you how to calculate the number of crossheads needed.

You only have to take into account the measurements of the ceramic (A and B) chosen and the result is the necessary pieces per sq.ft.

Multiplying the number of crossheads that results by sq.ft., the total number of crossheads needed according to surface area is obtained.

A"																							
4	22																						
6	15	9,8																					
8	11	7,4	5,5																				
10	10	5,8	4,4	3,5																			
12	11	5	4,4	3,6	3,6																		
14	11	7,4	5,5	4,4	3,2	3,1																	
16	11	7,4	5,5	4,4	3,6	3,2	2,6																
18	10	6,5	4,8	4	3,3	2,6	2,4	2,2															
20	9	5,8	4,4	3,5	3	2,5	2,2	2	1,8														
22	8	5,3	4	3,2	2,6	2,3	2	1,8	1,7	1,4													
24	8	5,5	4	3,3	2,8	2,3	2,1	1,9	1,7	1,5	1,4												
26	7,8	5	3,9	3	2,5	2,2	1,9	1,7	1,5	1,4	1,3	1,2											
28	7,6	5,3	4	3,2	2,6	2,2	2	1,8	1,5	1,4	1,3	1,2	1,1										
32	7,8	5	3,7	3	2,5	2,2	1,9	1,7	1,5	1,3	1,2	1,1	1										
36	7,6	4,5	3,4	2,6	2,2	1,9	1,7	1,5	1,3	1,2	1,1	1	1	0,9	0,8								
40	6,6	4,4	3,3	2,6	2,2	1,9	1,7	1,4	1,3	1,2	1,1	1	1	0,9	0,8	0,7							
44	6,5	4,3	3,3	2,6	2,2	1,9	1,7	1,4	1,3	1,2	1,1	1	0,9	0,8	0,8	0,7	0,6						
48	6	4	3	2,4	2	1,7	1,5	1,3	1,2	1,1	1	0,9	0,9	0,8	0,7	0,6	0,6	0,6					
56	5	3	2,2	1,9	1,9	1,4	1,3	1,3	1,2	1,1	1	1	0,9	0,8	0,7	0,7	0,6	0,5	0,5				
60	5	2,9	2,3	1,9	1,9	1,4	1,3	1,3	1,2	1	1	0,9	0,9	0,8	0,7	0,7	0,6	0,5	0,3	0,3			
72	5	3,3	2,3	1,9	1,9	1,4	1,3	1,3	1,2	1	1	0,9	0,9	0,8	0,7	0,7	0,6	0,5	0,3	0,3			
80	4,4	3	2,2	1,8	1,8	1,3	1,3	1,3	1,1	1	1	0,9	0,9	0,8	0,8	0,7	0,6	0,5	0,3	0,3	0,3		
↗	4	6	8	10	12	14	16	18	20	22	24	26	28	32	36	40	44	48	56	60	72	80	B"

Approximate amount



Example: $A''_{32} \times B''_{20} = 1,5 \text{ pieces/sq.ft}$



Profilber Composites
info@profilber.com

Calle Castelló de la Plana, 5
03440 Ibi, Alicante (Spain)
(+34) 865 753 631 • (+34) 644 075 063

www.profilber.com